

70" Commercial Display

450 nit, 2500:1 contrast ratio, & built in video wall processor



Key Features:

- Samsung commercial grade DID panel
- Robust power supply
- Dual touch IR
- Optional network control
- HDMI In/Out
- SICIP (Serial Interface Control Program) software included

Specifications:

Model	ZM70P	
Panel	Size	70" LED
	Resolution, Horizontal	1920
	Resolution, Vertical	1080
	Brightness	400nit
	Contrast Ratio	3,000:1 (Typ.)
	Viewing Angle	178°/ 178°
	Panel Response Time	8ms (Typ. GTG)
	Aspect Ratio	16:9
	Refresh Frequency	60hz
	Bezel Color/Type	Black/Metal
IP Board	Lamp Lifetime	≥ 50,000 hours
	HDMI (Ver 1.3a)	2
	VGA (DSUB)	1
	Component	1
	CVBS	1
	RS232C (9600 bps)	1
Power	USB	1
	Audio	Yes
	Power (AC)	100V~240V
	Power Consumption	300W
	Standby Power Consumption	< 1W

main features



- Commercial Grade DID panel from Samsung



- Analog & digital video signal daisy-chain compatability. (Composite, Component, PC, HDMI)



- Built-in video wall processor controls up to a 10x10 array and optionally 16x16.



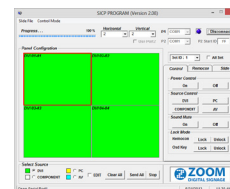
- Display multiple sources at once (Picture by Picture or Picture in Picture).



- Installation flexibility (Landscape or portrat orientations)



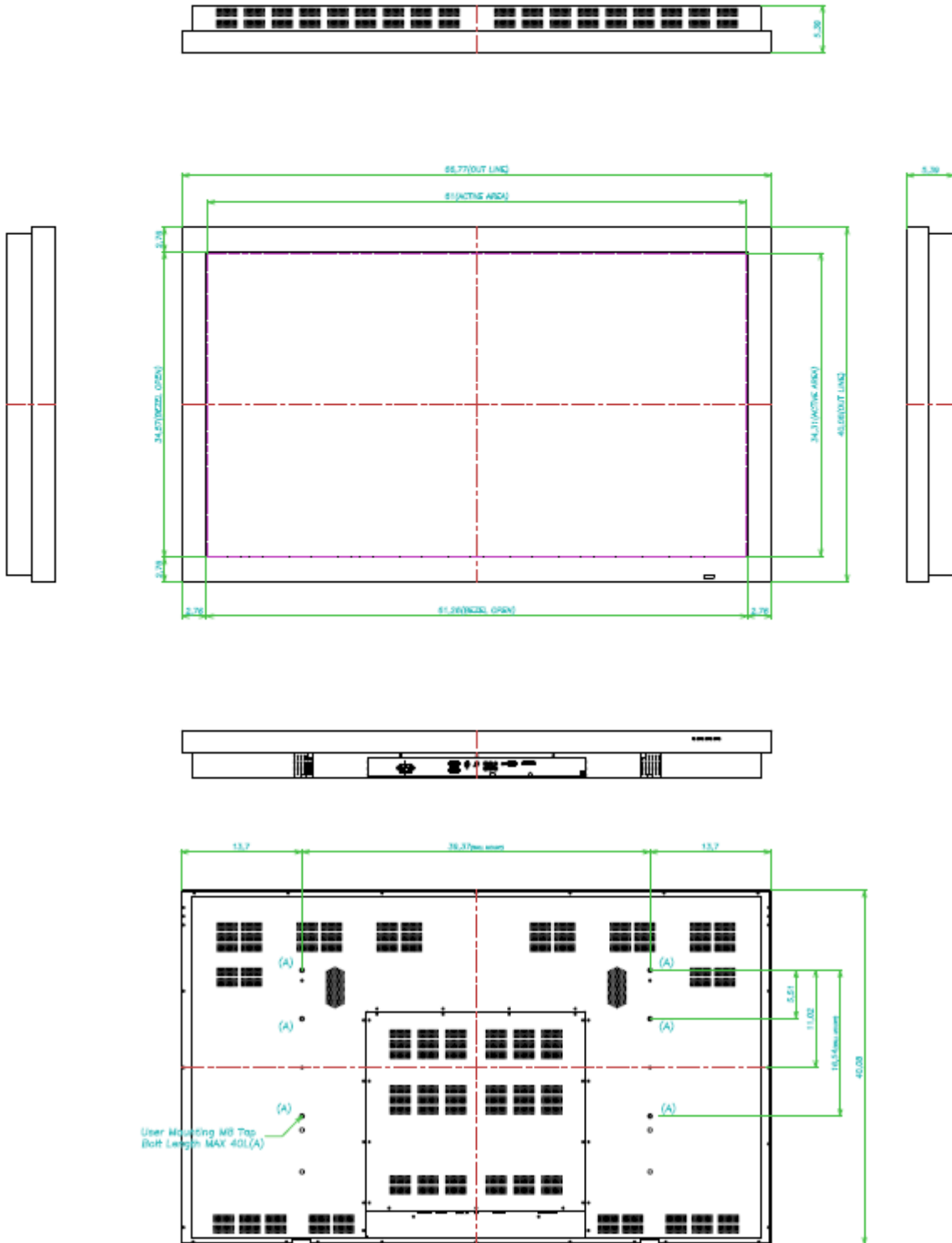
- Built-in speakers



- Easy to use control software via RS-232 or remote control.

70" Commercial Display

mechanical drawing



70" Commercial Display

accessories included



*SICP Serial Control
Software & Manual*



RS-232 Cable



AC Power Cable



Remote Control



HDMI Cable



RGB Cable



Batteries (AAA x 2)