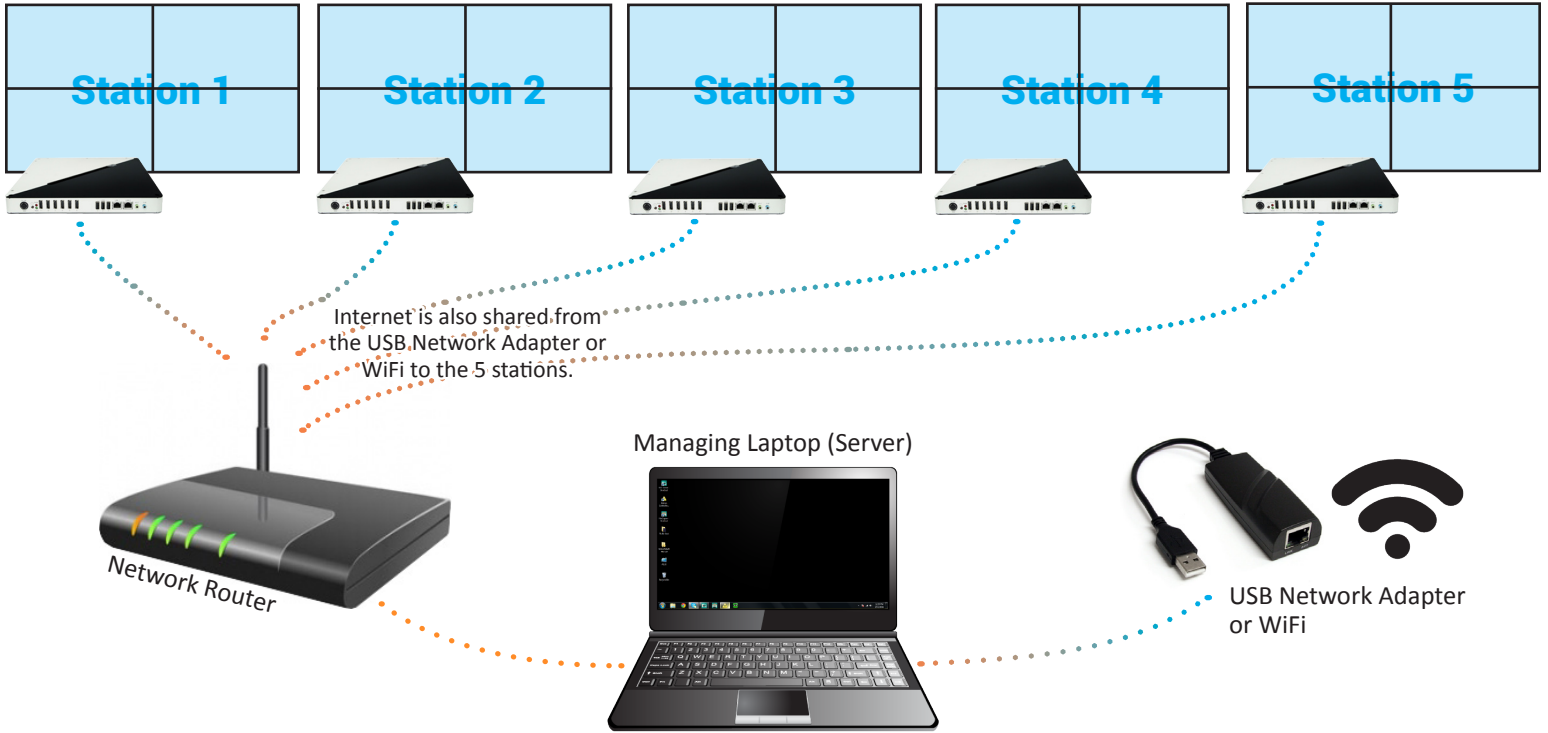


VLC Station Controller

diagram



setting up

1. Connect the TV HDMI cables to the corresponding HDMI ports on the PC.



2. Connect the Cat5 cables from the network router to 5 of Player PC's LAN port #1, and laptop servers ethernet port on its left side.

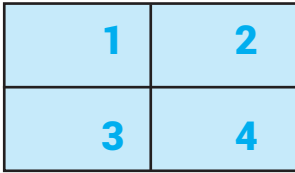


3. Turn On All TVs, making sure that the input is set to HDMI 1.
4. Turn on the server laptop and network router.
5. Turn on the 5 station PC's.

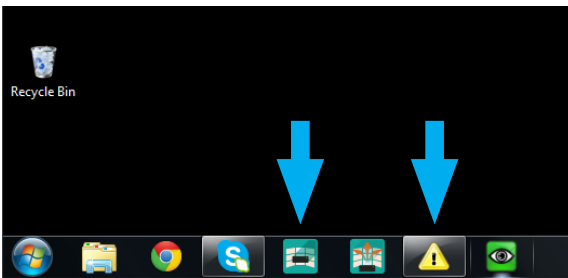
VLC Station Controller

setting up

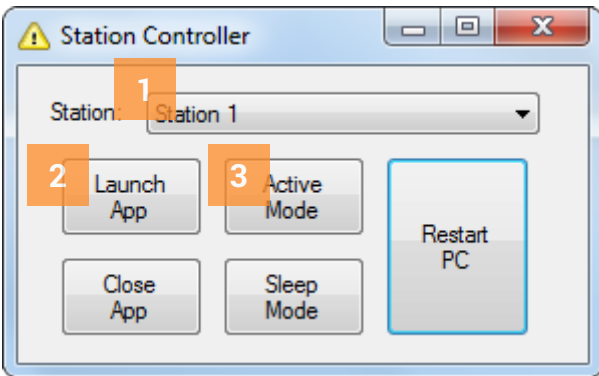
- Under your Control Panel\All Control Panel Items\Display\Screen Resolution, arrange the monitors to correspond with their physical arrangement. The top 2 monitors should be flipped and the monitor on the top left should be set as the main display.



- Run the Station Controller and Station Server programs from main laptop.



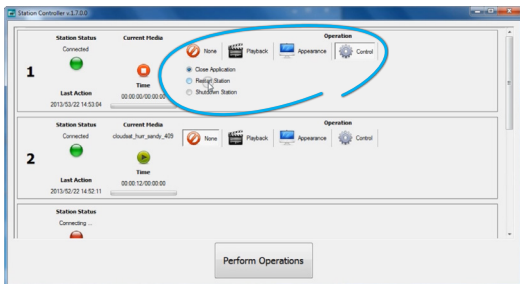
- Launch the programs and set each station to Active.



- Now you are ready to play any video and intermission content (image or video) with the desired looping time. You should ensure that your video content is the same in length, and that the intermission length is the same across all 5 stations.

shutting down

- From Station Server Point station to shutdown (under Control+Shift+Shutdown Station)



- Wait for the next cycle of presentations to start or click perform.
- Turn off the laptop.